

HADLEY[®]

INTERIOR SYSTEMS

PRODUCT FAMILY

Hadley Interior Systems are a collection of customizable, flexible luggage racks that deliver a premium motorcoach passenger experience to the transit and shuttle market. Hadley's Interiors are modular starting with a seamless, rattle-free parcel rack with hand-rail.

Configure your own system based on the Y+, Wave, Swan, or Xtreme platforms, or choose from one of our pre-configured systems. Add amenities now or in the future. Every model in the Hadley collection is fully upgradeable with reading lights, night lights, and other options. Ducted units include passenger-controlled air vents with a built-in air-conditioning channel for personal comfort.

FEATURES

- *Modularity with a wide range of options*
- *Seamless luggage rack*
- *Rattle free system*
- *Built to UIC 566 requirements*
- *Perfect linearity with aluminum profiles and nylon fiberglass brackets*
- *Handrails for passenger safety*
- *Easy to clean*
- *Durable material*
- *Easy installation or replacement*
- *Can be installed as aftermarket solution*
- *Upgradable amenity cavities*

Y+[™]



15" profile for narrow buses

Wave[™]



Unique 19.6" wide profile

SWAN[™]



Our most popular and flexible model

XTreme[™]



The largest loading floor space available



SELECT

Base luggage rack with passenger controlled reading lights and blue night lights built into the underside of the hand rails.



CONSTELLATION

Base luggage rack with added amenity cavity for optional reading lights, night lights & air nozzles.



CONSTELLATION A/C

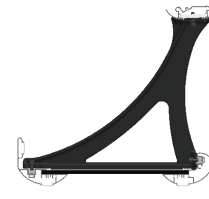
Base luggage rack with added amenity cavity for optional reading lights, night lights & air nozzles. PLUS, air conditioning channel for immediate or future A/C.

SIMPLE. DURABLE. FLEXIBLE.



Y+

15" wide SLIM profile system for narrow buses, including Sprinters.



Y+ SELECT



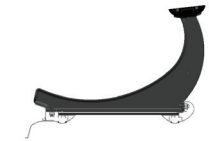
Y+ CONSTELLATION

N/A



Wave

Unique 19.6" wide profile with versatile luggage rack and all of the same optional amenities that are currently offered in the popular Swan model.



WAVE SELECT



WAVE CONSTELLATION

N/A



Swan

Our most popular and flexible model at 22" wide profile. Every Swan system includes the Omega channel for adding (optional) aisle lighting.



SWAN SELECT



SWAN CONSTELLATION



SWAN CONSTELLATION A/C



Xtreme

The Xtreme provides the largest loading floor space available in a 22" wide install profile. It's the newest addition to our shuttle family.



XTREME SELECT



XTREME CONSTELLATION

N/A