

INSTALLATION INSTRUCTIONS FOR MODEL H00962EA

IMPORTANT: REVIEW ALL INSTRUCTIONS, PARTS LISTS, & INSTALLATION DIAGRAMS
BEFORE STARTING INSTALLATION

HORN ASSEMBLY

1. Follow steps 3-5 for both horns. For best results, mount horns in an unobstructed opening for sound to carry straight ahead. If possible mount with a slight downward angle to allow moisture to drain out.
2. For roof mount installation: If vehicle is equipped with interior roof trim panel, remove to install horn.
3. Drill 1/2 in. and (2) 5/16 in. holes (use mounting gasket for template, (Horn mounting template)) in position desired for horn.
4. Place mounting gasket (item# 3)(H16504S) between base of horn and top of vehicle roof. (You can use silicone to make a better seal between gasket and roof.)
5. Place tension washer (item# 6) on lanyard valve (item# 7) as shown in figure 1, next thread lanyard valve into the base of the horn from under the roof. Insert screw (item# 1) through hole of horn base and roof, attach lock washer (item# 4) and hex nut (item# 5). Tighten both screw and lanyard. Connect nylon tubing (item# 10) to lanyard valve using brass insert (item# 9) and tube nut (item# 8). Then run tube to tank location.
(**Optional Step 5**) Mount lanyard valve (item# 7) to bracket (item# 34) using jam nut (item# 35) as shown in figure 2. Attach lanyard bracket to desired location using (2) self-tapping screws (item# 33). Place tension washer (item# 6) on mounting elbow (item# 32), next thread the elbow into the base of the horn from under the roof. Insert screw (item# 1) through hole of horn base and roof, attach lock washer (item# 4) and hex nut (item# 5). Tighten both screw and elbow. Connect nylon tubing (item# 10) first to mounting elbow and then to lanyard valve. Next connect tubing to lanyard and run tube down to tank location.
6. Replace trim panel.

TANK ASSEMBLY

1. Select mounting location for air tank (item# 14) keeping in mind the orientation of the tank and visibility of the air gage. (See Figure 1 for sample installation)
 2. Thread brass fitting (item# 29) into brass cross (item# 28), then install brass fitting into either tank outlet. Next thread other brass fitting (item# 12) into brass cross. In remaining (2) outlets of the brass cross, thread tire valve (item# 27), and check valve (item# 11).
 3. Thread brass tee fitting (item# 13) into remaining tank outlet. Thread the pressure gage (item# 18) and pressure switch (item# 16) into the tee.
- CAUTION:** Tighten pressure switch and pressure gage on brass hex body only.
4. To mount tank drill (2) 11/32 in. diameter holes spaced 4 in. apart in a rigid surface (Tank mounting template). Insert tank studs through the holes and secure with locknuts (item# 15).
 5. Connect tube from lanyard to fitting #12 in item #28.

COMPRESSOR ASSEMBLY

1. As shown in Figure 2, slide the (2) grommets (item# 23) into slots. Next push the (2) brass eyelets (item# 22) into the grommets. Pull the (4) bumpers (item# 25) through the (4) round holes on the bracket.
2. Clamp compressor head and install brass fitting (item# 12) into air outlet as shown in figure 1.
3. Mount compressor on rigid support. Do not mount on fender well, firewall or other flexible material. Do locate compressor in area with good air flow and away from road surface to avoid excessive water and dirt conditions.
4. Mounting requires (2) holes spaced 2- 3/16 in. apart, each having a diameter of 7/32 in. (Compressor mounting template)
5. To mount compressor, insert 10-32 bolt (item# 21) through the brass eyelet and through the 7/32 in. hole. Secure with the 10-32 nut (item# 24) as shown in figure 2. **Do not over tighten mounting bolts.**
6. Connect nylon tubing from air outlet fitting to the check valve (item #11) on the tank as shown in Figure 1.

ELECTRICAL ASSEMBLY

1. As shown in Figure 1 connect orange (+) wire from compressor motor to either pressure switch terminal. Next, connect fuse holder (item#26) to the other pressure switch terminal. Install other end of fuse holder to "ignition activated" accessory terminal in fuse panel. Attach motor's black wire (-) to metal ground.

NOTE: Compressor starts automatically when pressure drops below 110 psi. If more than 4 minutes are required to pump tank to full pressure (110-135 psi) with engine running and compressor does not shut off, check all connections with soapy water or bubble solution for leaks. Use thread sealant on all uncoated pipe threads. **Maximum cycle time 7 minutes with 30 minute cool down.**

CAUTION: Check local noise abatement ordinances to avoid legal violations.

INSTALLATION INSTRUCTIONS FOR MODEL H00962EA

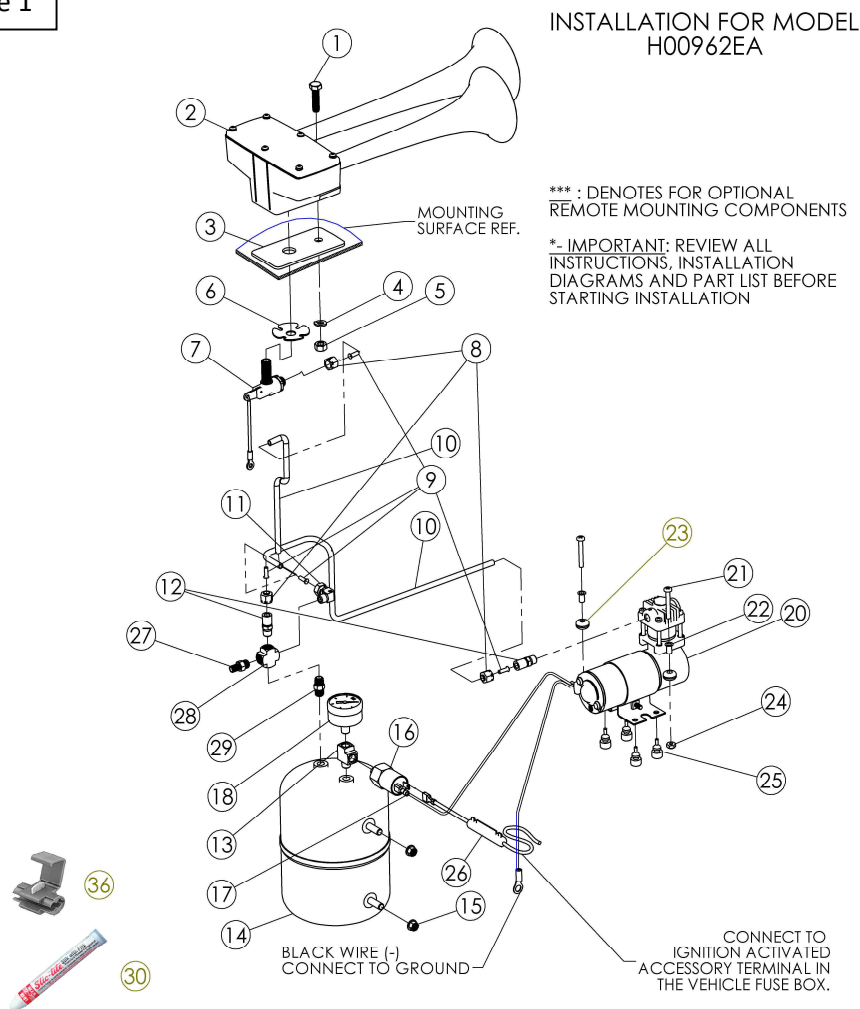
All Hadley products carry a limited warranty for 12 months from date of purchase. We will repair or replace, at our option, defects in material and workmanship during that period when product and proof of purchase are returned to our service department at the address below.



Hadley Products
Attn: Service Department
2851 Prairie SW, Suite D
Grandville, MI 49418

Service Department: (616) 249-8462
Main: (616) 530-1717 Fax: (616) 530-3283
www.service@hadleyadvantage.com

Figure 1



INSTALLATION FOR MODEL
H00962EA

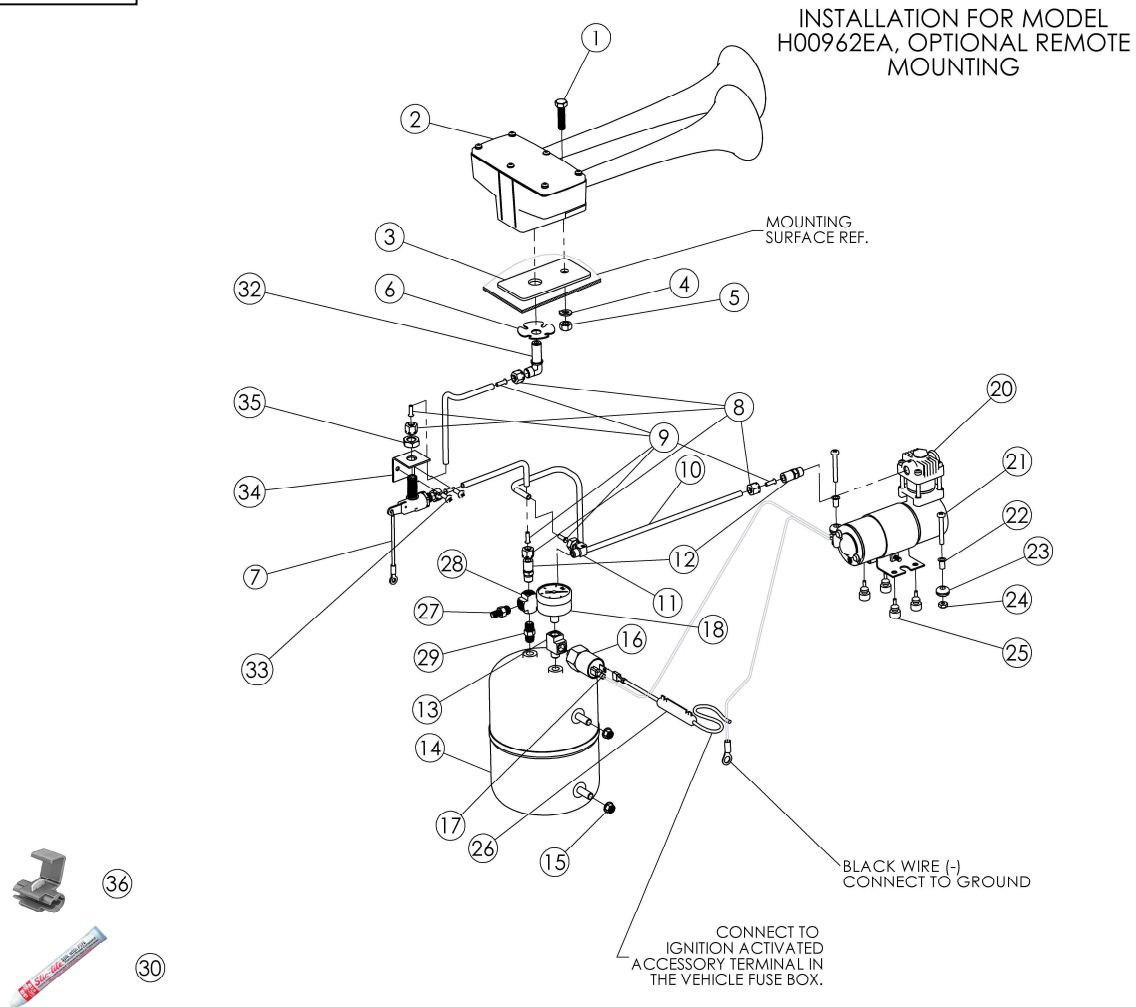
*** : DENOTES FOR OPTIONAL
REMOTE MOUNTING COMPONENTS
*- IMPORTANT: REVIEW ALL
INSTRUCTIONS, INSTALLATION
DIAGRAMS AND PART LIST BEFORE
STARTING INSTALLATION

PARTS LIST

ITEM	DESCRIPTION	QTY.
1	5/16-18 X 1 1/4" HEX HEAD BOLT	1
2	HORN ASSEMBLY	1
3	MOUNTING GASKET	1
4	LOCKWASHER	1
5	HEX NUT	1
6	TENSION WASHER	1
7	LANDYARD ASSEMBLY	1
8	COMPRESSION NUT	3
9	BRASS INSERT	4
10	1/4" DIA. NYLON TUBING	1
11	CHECK VALVE	1
12	7/16-24 & 1/8 NPT COMPRESSION FITTING	2
13	1/8-27 NPTF BRASS TEE FITTING	2
14	AIR TANK	1
15	5/16-18 UNC LOCKNUT	2
16	PRESSURE SWITCH	1
17	1/4" RECEPTACL TERMINAL	1
18	PRESSURE GAUGE 0-160psi	1
19	NUMBER BREAK FOR CLARITY	----
20	COMPRESSOR 1/6 hp, 12 VDC	
21	#10-32 UNF X 1.5" BOLT	2
22	EYELET	2
23	GROMMET	2
24	#10-32 UNF HEX NUT	2
25	BUMPER	4
26	FUSE & FUSE HOLDE ASSEMBLY	1
27	TIRE VALVE	1
28	CROSS	1
29	CLOSE NIPPLE	1
30	PIPE THREAD SEALANT (TUBE REQ'D. 01)	1
31	16 GA. WIRE	1
32	MOUNTING ELBOW	1
33	#10-32 X 1/2" TYPE 23 PAN HEAD SELF TAPPING SCREW	2
34	MOUNTING BRACKET	1
35	HEX JAM NUT	1
36	WIRE SPLICE CONNECTOR	1

INSTALLATION INSTRUCTIONS FOR MODEL H00962EA

Figure 2



MOUNTING TEMPLATES

×IMPORTANT READ PRIOR TO PRINTING:
WHEN PRINTING BE SURE PRINT SCALE SETTINGS ARE
SET TO 100% OR ACTUAL SIZE TO ASSURE TEMPLATE IS TO SCALE

