

# INSTALLATION INSTRUCTIONS FOR MODEL 850RFV

IMPORTANT: REVIEW ALL INSTRUCTIONS, PARTS LISTS, & INSTALLATION DIAGRAMS BEFORE STARTING INSTALLATION

1. As shown in figure 2, push the (2) grommets (item#6) into the grommet holes shown in figure 1. Next push the (2) brass eyelets (item#2) into the grommets. Pull the (4) bumpers (item#11) through the four round holes on the bracket (item#7). Place lockwasher (item#9) on machine screw (item #10) and insert into slots A (or optional B slots) on mounting bracket (item#7). Push retaining washer (item#5) onto machine screw until it firmly holds the machine screw on the mounting bracket. Place vacuum pump (item#3) onto the machine screws and secure with the hex nuts (item#4).
2. Mount vacuum pump on rigid support. Do not mount on fender well, firewall or other flexible material. Locate pump in area with good air flow and away from road surface to avoid excessive water and dirt conditions. Mounting requires two holes spaced 2in. apart, each having a diameter of 7/32in. Use mounting template provided.
3. To mount pump, insert 10-32 bolt (item#1) through the brass eyelet and through the 7/32in. hole. Secure with the 10-32 nut (item#8) as shown in figure 2. **Do not overtighten mounting bolts.**
4. Remove plastic cap from air inlet fitting, connect tubing from air inlet fitting to your application as shown in figure 2.
5. As shown in figure 3 connect orange (+) wire from vacuum pump motor to a fused 20 amp circuit. Vacuum pump will not shut off automatically, fused circuit to be attached to a switch or other device to cycle the pump on and off. Attach motor's black wire (-) to metal ground.

---

**NOTE:** Maximum cycle time 20 minutes with 30 minute cool down.

---

All Hadley products carry a limited warranty for 12 months from date of purchase. We will repair or replace, at our option, defects in material and workmanship during that period when product and proof of purchase are returned to our service department at the address below.

---



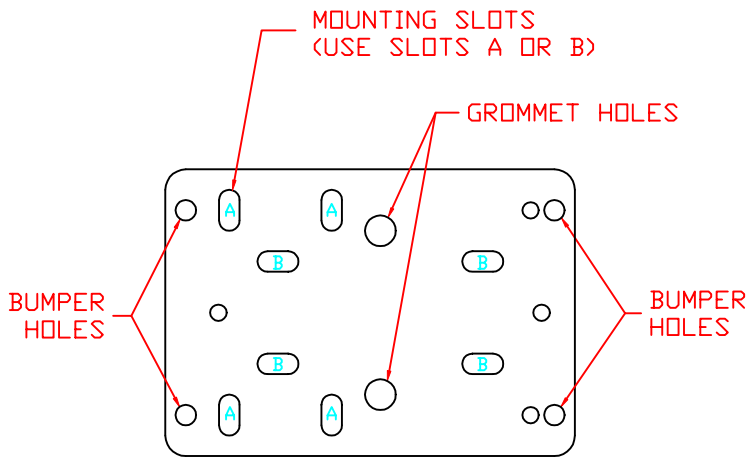
[www.hadley-products.com](http://www.hadley-products.com)

Hadley Products  
Attn.: Service Department  
2851 Prairie S.W., Suite D  
Grandville, MI 49418

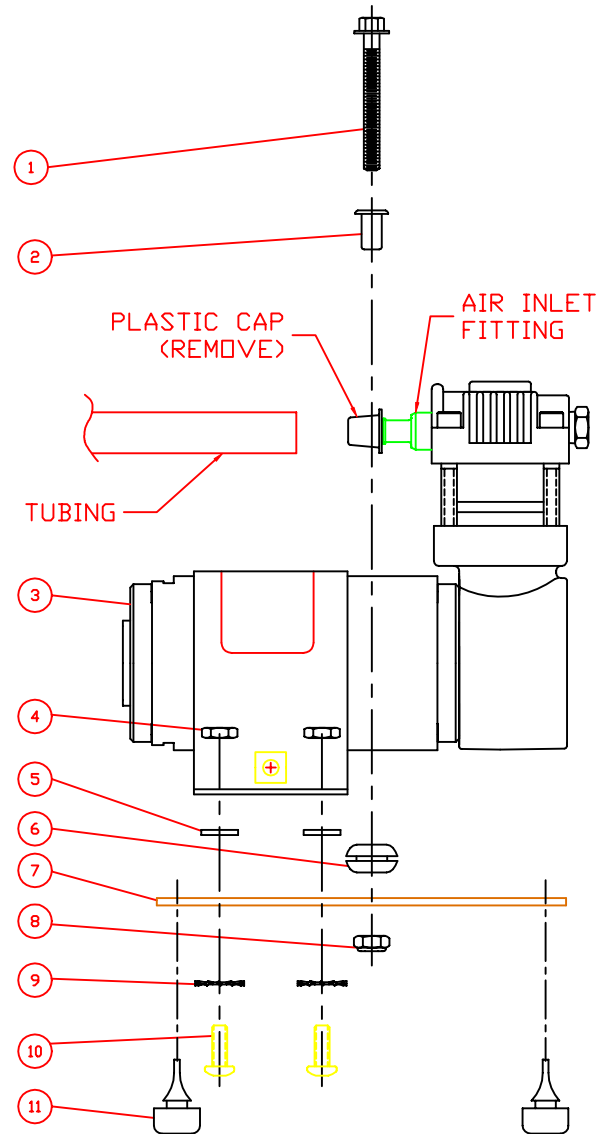
Service Department: (616) 249-8462  
Main: (616) 530-1717  
Fax: (616) 530-3283

# INSTALLATION DIAGRAM

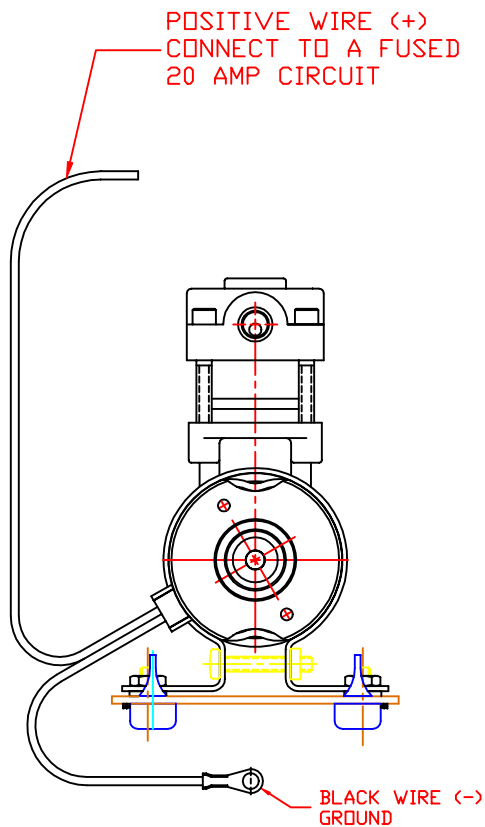
## FIGURE 1 MOUNTING HOLE PATTERNS



## FIGURE 2 BRACKET ASSEMBLY SHOWN USING "A" SLOTS



## FIGURE 3 ELECTRICAL ASSEMBLY



# PARTS LIST

(2)-QUANTITY  
BOLT 10-32  
H14168

1



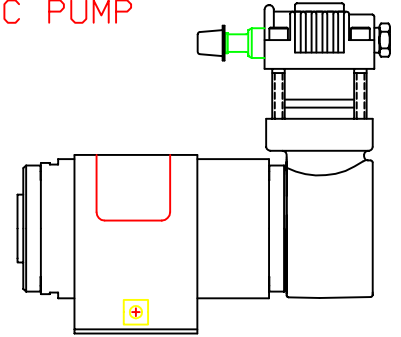
(2)-QUANTITY  
EYELET  
H15224

2



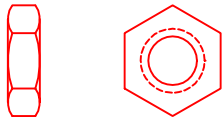
(1)-QUANTITY  
MODEL 850  
VAC PUMP

3



(4)-QUANTITY  
HEX NUT 10-32  
H15232

4



(4)-QUANTITY  
RETAINING WASHER  
H15230

5



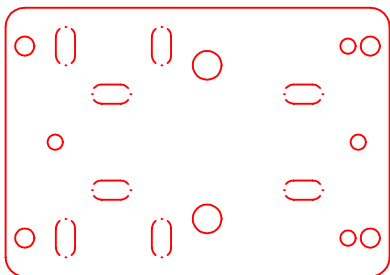
(2)-QUANTITY  
GROMMET  
H15234

6



(1)-QUANTITY  
BRACKET  
H15212

7



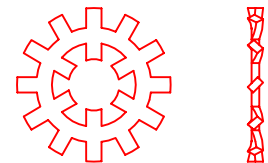
(2)-QUANTITY  
NUT 10-32  
H14591

8



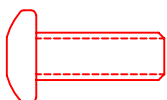
(4)-QUANTITY  
LOCK WASHER  
H15233

9



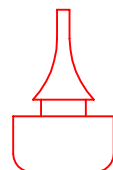
(4)-QUANTITY  
MACHINE SCREW  
H15231

10



(4)-QUANTITY  
BUMPER  
H14572

11



# MOUNTING TEMPLATE FOR BRACKET H15212

