

PISTON TOP PLATE, MAIN SEAL, AND SLEEVE REMOVAL AND INSTALLATION INSTRUCTIONS FOR COMPRESSOR MODEL 850

IMPORTANT: REVIEW ALL INSTRUCTIONS,
PARTS LISTS, & DIAGRAMS BEFORE STARTING

REMOVAL

1. SECURE COMPRESSOR IN VISE OR OTHER SECURING DEVICE.
2. REMOVE THE FOUR SCREWS ON THE HEAD AND LIFT HEAD OFF (SEE FIGURE 1).
3. REMOVE THE SCREW IN THE CENTER OF THE PISTON (SEE FIGURE 2).



FIGURE 1

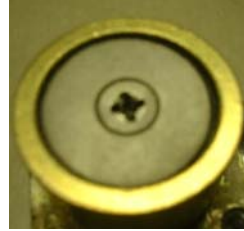


FIGURE 2

INSTALLATION

1. REMOVE AND DISCARD THE TAPE AND FOAM PIECES FROM THE NEW PARTS.
2. PLACE THE NEW SLEEVE ONTO THE COMPRESSOR, **MAKE SURE THE SLEEVE IS INSTALLED AS SHOWN IN FIGURE 3 & 4 WITH THE GROOVE DOWN.**

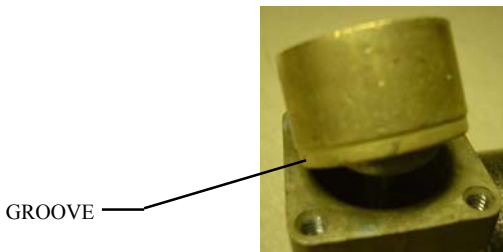


FIGURE 3

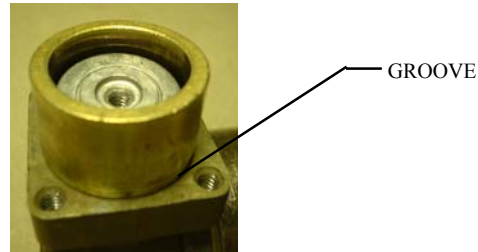


FIGURE 4

3. PLACE MAIN SEAL ONTO PISTON MOUNT SO IT IS FLUSH (SEE FIGURE 5).
4. PLACE PISTON TOP PLATE ON MAIN SEAL WITH CHAMFERED HOLE UP (SEE FIGURE 6).
5. INSERT SCREW INTO THE PISTON TOP PLATE AND TORQUE TO 50 IN-LBS.
6. MAKE SURE O-RING IS IN GROOVE IN BOTTOM OF HEAD AS SHOWN IN FIGURE 7.
6. PLACE HEAD SO THAT THE SLEEVE FITS INTO THE GROOVE IN THE BOTTOM OF THE HEAD. BE AWARE OF THE DIRECTION OF THE HEAD, FIGURE 1 SHOWS TYPICAL DIRECTION.
7. TORQUE THE FOUR SCREWS TO 50 IN-LBS IN A CROSS PATTERN SO HEAD WILL SEAT LEVEL.



FIGURE 5

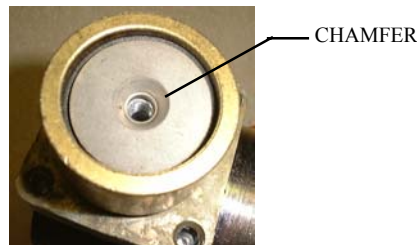


FIGURE 6

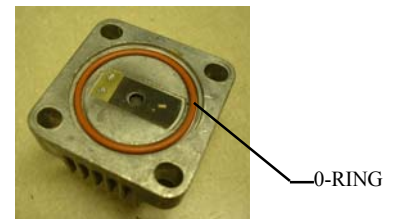


FIGURE 7

