

USE ONLY WITH *SERIES II* ELECTRONICS.

Older Transmitters and Receivers will not work with these new electronics. There are no Security Code Switches inside the Door Operators, Transmitters and Receivers.

⚠ WARNING

Moving Door can cause serious injury or death.

- **Do Not** install transmitter unless the door operator's **safety reverse** works as required by the door operator's manual.
- Wall control must be mounted in sight of door, at least 5 feet above floor and clear of moving door parts.
- **Keep people clear** of opening while door is moving.
- **Do Not** allow children to play with the transmitter or door operator.

If **safety reverse** does not work properly:

- **Close door then disconnect operator** using the manual release handle.
- **Do Not** use transmitter or door operator.
- Refer to Door and Door Operator Owner's Manuals before attempting any repairs.



Electrical Shock can cause serious injury or death.

- Power cord must be unplugged before attaching any wires.
- Be sure wire ends do not touch each other or other terminals.

If you have questions or if you need a manual, contact the distributor or manufacturer of the operator.

A different Transmitter Code is set at the factory for each *SERIES II* INTELLICODE Transmitter.

2 TO PROGRAM THE RECEIVER

- Step 2-1** Locate the Learn Code Button and Radio Signal Indicator on the Power Head Receiver of your Door Operator.
- Step 2-2** Press and release the Learn Code Button **Fig. 1**.
- The Radio Signal Indicator will blink approximately 2 times per second.
- Step 2-3** Press a Transmitter Button once within 30 seconds.
- The Radio Signal Indicator stays lit - **SOLID**.

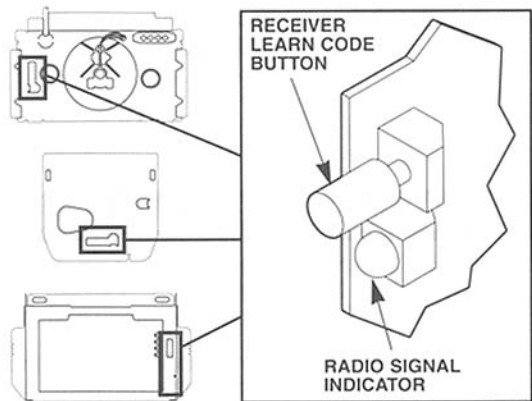


Fig. 1

- Step 2-4** Press the same Transmitter Button within 30 seconds.
- Radio Signal Indicator will go out.

NOTE: If a second Transmitter Code is not confirmed within 30 seconds or if a different Transmitter Code is sent, the Radio Signal Indicator will blink approximately 4 times per second, then programming will stop. If programming stops, repeat Steps 2-2 through 2-4.

- Step 2-5** Repeat Steps 2-2 through Step 2-4 for each Transmitter, Wireless Keypad or other access device to be learned.