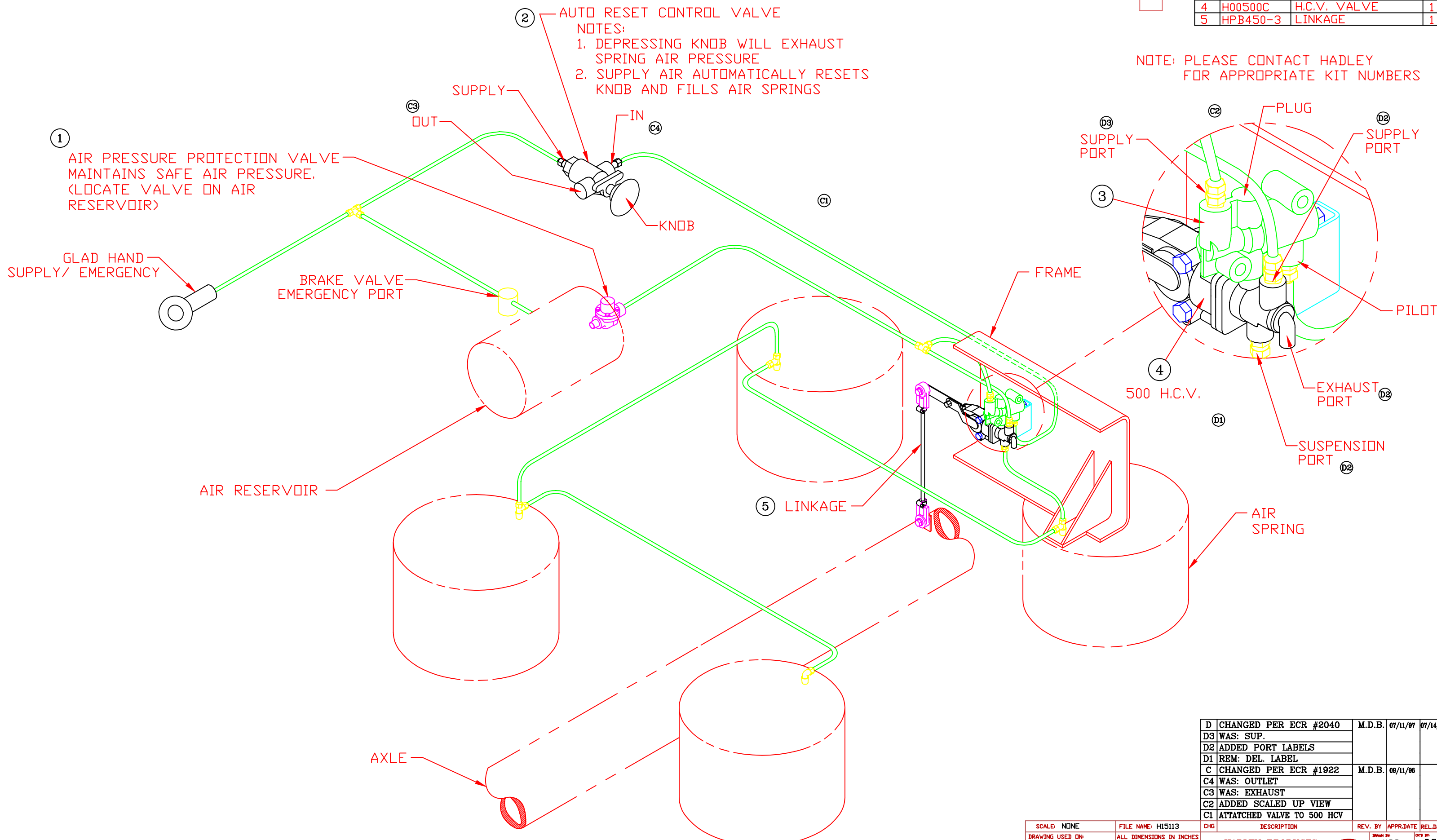


# H00500 HCV PLUMBING - MANUAL DUMP/AUTOMATIC REFILL

ITEM	PART NO.	DESCRIPTION	QTY
1	H14424	PPV VALVE	1
2	H15131	AUTO REVERSE VLV.	1
3	H15162	REV. DUMP VLV.	1
4	H00500C	H.C.V. VALVE	1
5	HPB450-3	LINKAGE	1



NOTE: PLEASE CONTACT HADLEY FOR APPROPRIATE KIT NUMBERS

D	CHANGED PER ECR #2040	M.D.B.	07/11/97	07/14/97
D3	WAS: SUP.			
D2	ADDED PORT LABELS			
D1	REM: DEL. LABEL			
C	CHANGED PER ECR #1922	M.D.B.	09/11/96	
C4	WAS: OUTLET			
C3	WAS: EXHAUST			
C2	ADDED SCALED UP VIEW			
C1	ATTACHED VALVE TO 500 HCV			

SCALE	FILE NAME	CHG	DESCRIPTION	REV. BY	APPR. DATE	REL. DATE
NONE	H15113					
DRAWING USED ON:						
ALL DIMENSIONS IN INCHES						
TOLERANCES UNLESS OTHERWISE SPECIFIED:						
DECIMAL 2 PLC. ± .010						
DECIMAL 3 PLC. ± .005						
FRACTIONAL ± 1/64						
ANGULAR ± .5°						
<b>HADLEY PRODUCTS</b> 2851 PRAIRIE S.W. GRANDVILLE, MI 49418						
PART NAME		C	REV	PART NO.	REV	
AIR SUSP. PLUMBING		A	D	H15113	D	