

HAD500RS



HCV		
PART NO.	PART NAME	QTY
H00500-26	HCV ASS'Y	1
H15567	BRACKET	1
H15568	BRACKET	1

HPB450-15		
PART NO.	PART NAME	QTY
H13964	LOCKNUT	2
H14406	LINK SCREW	2
H14407	WASHER	2
H14408	ROD END	2
H14418	CLAMP	2
H14413-33	ROD	1

REV	ECR	DESCRIPTION	REV BY	REV. DATE
B	2930	CHANGED IS TO RS	E.R.E.	06/06/2001
C	3170	CORRECTED PLUMBING DIAGRAM ON PG 2	B.A.B.	06/21/2002
D	3959	ADDED BRACKET NOTES	BD	03/14/2006

IMPORTANT:

THIS HEIGHT CONTROL VALVE (HCV) KIT CONTAINS 3 PLUMBING DIAGRAMS. PLEASE REVIEW YOUR APPLICATION TO SELECT THE PROPER PLUMBING AND KIT OPTION.



HPB500-14		
PART NO.	PART NAME	QTY
H15571	90° FITTING	2
H15388	1/4-20 BOLT	2
H13404	WASHER	2
H13964	LOCKNUT	2
H14407	WASHER	2
H15573	5/16-18 BOLT	2
H15574	5/16-18 NUT	2

HAD500NS



HCV		
PART NO.	PART NAME	QTY
H00500-26	HCV ASS'Y	1
H15567	BRACKET	1
H15568	BRACKET	1

HPB450-15		
PART NO.	PART NAME	QTY
H13964	LOCKNUT	2
H14406	LINK SCREW	2
H14407	WASHER	2
H14408	ROD END	2
H14418	CLAMP	2
H14413-33	ROD	1



*HPB500-13		
PART NO.	PART NAME	QTY
H15570	TEE FITTING	1
H15571	90° FITTING	2
H15572	STRAIGHT FITTING	1
H15388	1/4-20 BOLT	2
H13404	WASHER	2
H13964	LOCKNUT	2
H14407	WASHER	2
H15573	5/16-18 BOLT	2
H15574	5/16-18 NUT	2

APPLICATION	PLUMBING SCHEMATIC	KIT REQUIRED
HCV WITH NON DUMP	H15575 SHEET 4	HAD500NS
HCV WITH EXTERNAL DUMP	H15575 SHEET 2	HAD500RS OR HAD500NS
HCV WITH INTEGRAL DUMP	H15575 SHEET 3	HAD500NS



FOR ASSISTANCE CALL HADLEY PRODUCTS AT 616-530-1717 OR VISIT US ON THE WEB AT www.hadley-products.com

*HPB500-13 CONTAINS EXTRA FITTINGS THAT MAY NOT BE USED FOR EACH APPLICATION.

SCALE: 1:4	SHEET NUMBER 1 OF 4	ALL DIMENSIONS IN INCHES	HADLEY PRODUCTS 2851 PRAIRIE STREET S.W. GRANDVILLE, MI 49418 PHONE: 616.530.1717 FAX: 616.530.3283 		DRAWN BY: E.R.E.	DATE: 06/19/2001		
MODEL: NONE		TOLERANCES UNLESS OTHERWISE SPECIFIED:	DESCRIPTION: INSTALLATION DIAGRAM		CHECKED BY: D.E.W.	DATE: 03/14/2006		
THIS DOCUMENT AND THE DATA SHOWN ON IT ARE THE PROPERTY OF HADLEY PRODUCTS AND MAY NOT BE USED IN ANY WAY THAT IS DETRIMENTAL TO HADLEY PRODUCTS, AND MUST BE RETURNED ON DEMAND. ACCEPTANCE OF THIS DOCUMENT CONSTITUTES ACCEPTANCE OF THESE CONDITIONS BY THE RECIPIENT.		DECIMAL 2 PLC. ±.01 DECIMAL 3 PLC. ±.005 FRACTIONAL ±1/64 ANGULAR ±.5			CAD Solid Works	DRW SIZE: B	DRW NO: H15575	DRW REV: D

PLUMBING FOR USING THE 500 HCV WITH EXTERNAL DUMP VALVE

VERY IMPORTANT:

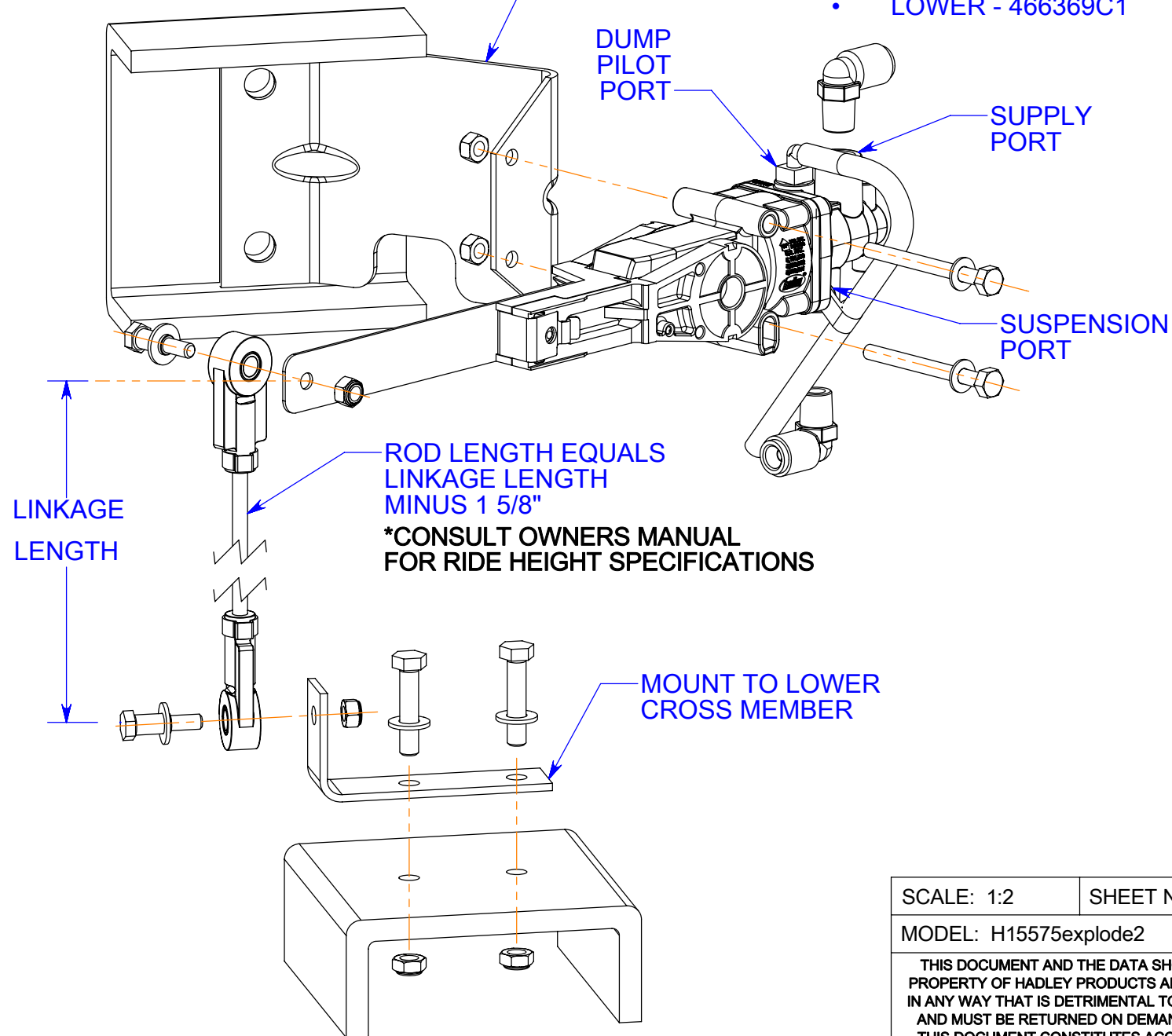
USE EITHER PART #HAD500RS OR HAD500NS FOR THIS APPLICATION.

REV	ECR	DESCRIPTION	REV BY	REV. DATE
B	2930	CHANGED IS TO RS	E.R.E.	08/06/2001
C	3170	CORRECTED PLUMBING DIAGRAM ON PG 2	B.A.B.	06/21/2002
D	3959	ADDED BRACKET NOTES	BD	03/14/2006

REPLACE EXISTING HCV & BRACKET

FOR HENDRICKSON SUSPENSIONS ON PAYSTAR ONLY

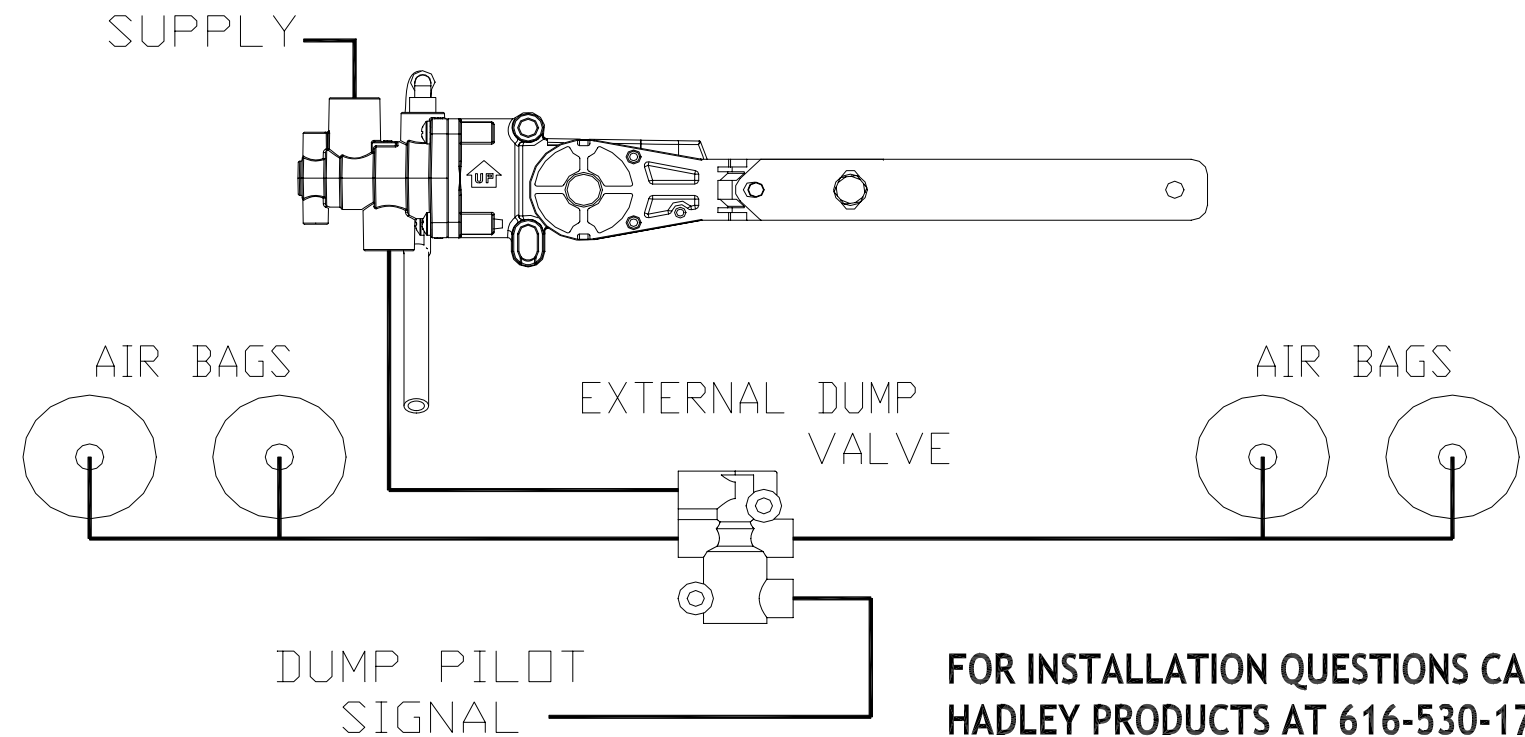
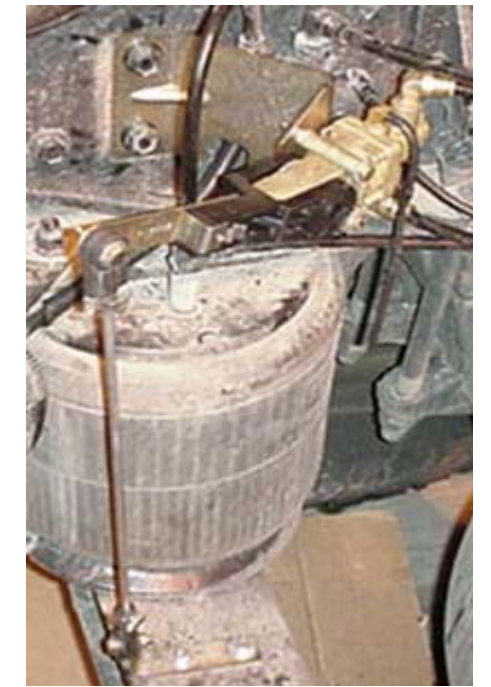
- DRIVERS SIDE HCV MOUNTING WILL REQUIRE THE FOLLOWING BRACKETS:
 - UPPER - 3562177C1
 - LOWER - 466369C1
- PASSENGER SIDE HCV MOUNTING WILL REQUIRE THE FOLLOWING BRACKETS:
 - UPPER - 3562176CA
 - LOWER - 466369C1




BEFORE



AFTER



FOR INSTALLATION QUESTIONS CALL HADLEY PRODUCTS AT 616-530-1717

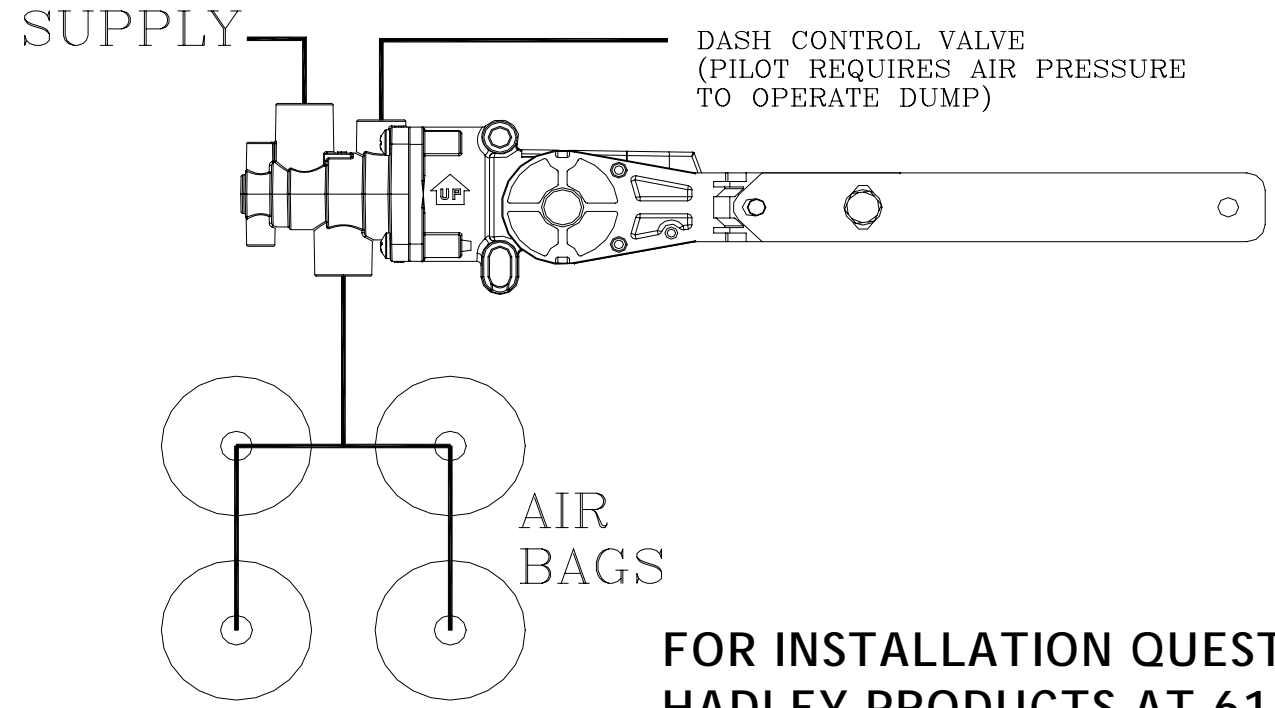
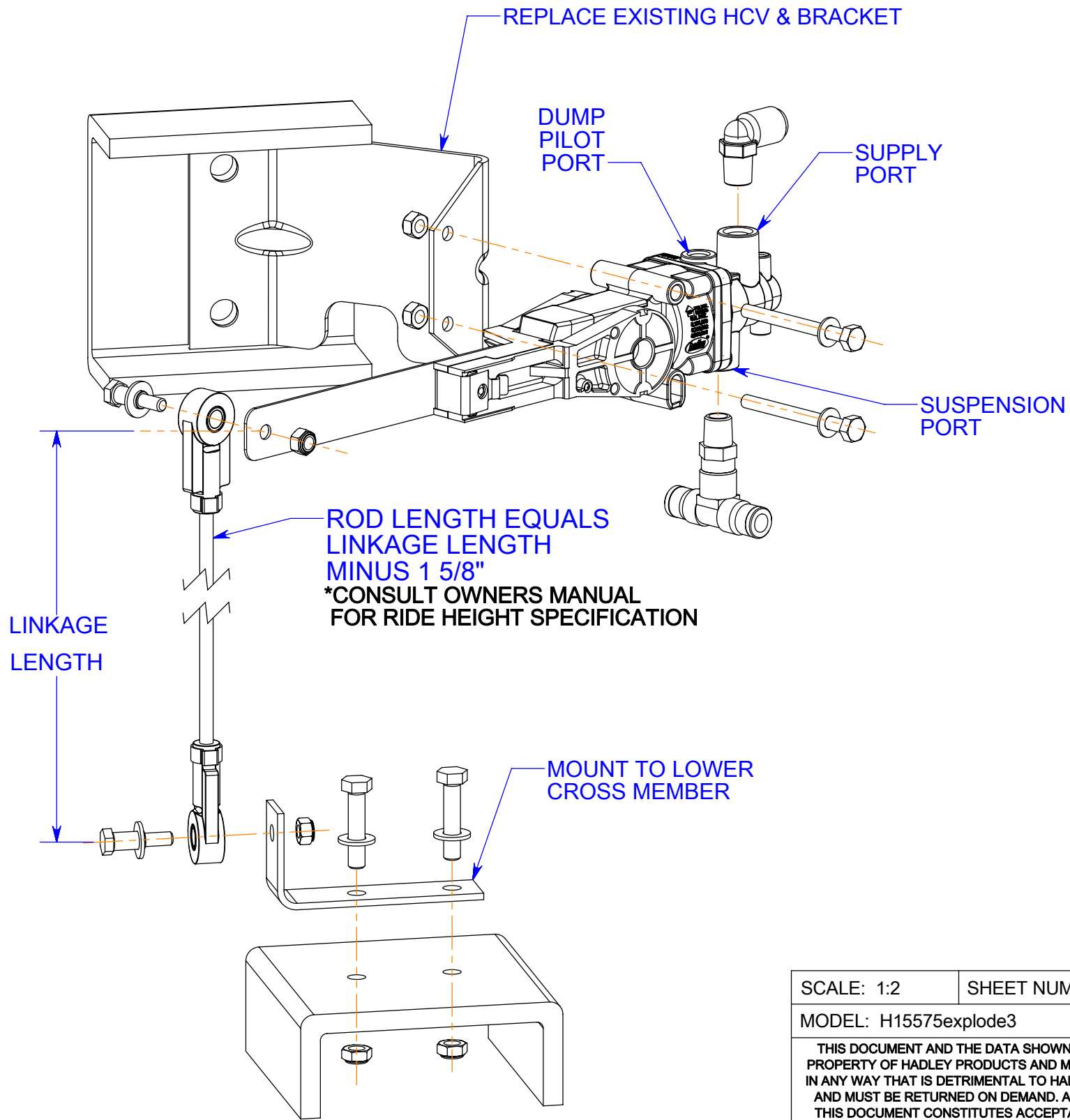
SCALE: 1:2	SHEET NUMBER 2 OF 4	ALL DIMENSIONS IN INCHES	HADLEY PRODUCTS 2851 PRAIRIE STREET S.W. GRANDVILLE, MI 49418 PHONE: 616.530.1717 FAX: 616.530.3283	DRAWN BY: E.R.E.	DATE: 06/19/2001		
MODEL: H15575explode2			 www.hadley-products.com	CHECKED BY: D.E.W.	DATE: 03/14/2006		
THIS DOCUMENT AND THE DATA SHOWN ON IT ARE THE PROPERTY OF HADLEY PRODUCTS AND MAY NOT BE USED IN ANY WAY THAT IS DETRIMENTAL TO HADLEY PRODUCTS, AND MUST BE RETURNED ON DEMAND. ACCEPTANCE OF THIS DOCUMENT CONSTITUTES ACCEPTANCE OF THESE CONDITIONS BY THE RECIPIENT.				DESCRIPTION: INSTALLATION DIAGRAM	CAD Solid Works	DRW SIZE B	DRW NO: H15575
TOLERANCES UNLESS OTHERWISE SPECIFIED: DECIMAL 2 PLC. ±.01 DECIMAL 3 PLC. ±.005 FRACTIONAL ±1/64 ANGULAR ±.5							

REV	ECR	DESCRIPTION	REV BY	REV. DATE
B	2930	CHANGED IS TO RS	E.R.E.	08/06/2001
C	3170	CORRECTED PLUMBING DIAGRAM ON PG 2	B.A.B.	06/21/2002
D	3959	ADDED BRACKET NOTES	BD	03/14/2006

PLUMBING FOR USING THE 500HCV TO DUMP SUSPENSION

VERY IMPORTANT:
USE PART #HAD500NS FOR THIS APPLICATION.

BEFORE AFTER



FOR INSTALLATION QUESTIONS CALL HADLEY PRODUCTS AT 616-530-1717

SCALE: 1:2	SHEET NUMBER 3 OF 4	ALL DIMENSIONS IN INCHES	HADLEY PRODUCTS 2851 PRAIRIE STREET S.W. GRANDVILLE, MI 49418 PHONE: 616.530.1717 FAX: 616.530.3283 www.hadley-products.com	DRAWN BY: E.R.E.	DATE: 06/19/2001		
MODEL: H15575explode3		TOLERANCES UNLESS OTHERWISE SPECIFIED: DECIMAL 2 PLC. ±.01 DECIMAL 3 PLC. ±.005 FRACTIONAL ±1/64 ANGULAR ±.5		CHECKED BY: D.E.W.	DATE: 03/14/2006		
THIS DOCUMENT AND THE DATA SHOWN ON IT ARE THE PROPERTY OF HADLEY PRODUCTS AND MAY NOT BE USED IN ANY WAY THAT IS DETRIMENTAL TO HADLEY PRODUCTS, AND MUST BE RETURNED ON DEMAND. ACCEPTANCE OF THIS DOCUMENT CONSTITUTES ACCEPTANCE OF THESE CONDITIONS BY THE RECIPIENT.			DESCRIPTION: INSTALLATION DIAGRAM	CAD SolidWorks	DRW SIZE: B	DRW NO: H15575	DRW REV: D

REV	ECR	DESCRIPTION	REV BY	REV. DATE
B	2930	CHANGED IS TO RS	E.R.E.	08/08/2001
C	3170	CORRECTED PLUMBING DIAGRAM ON PG 2	B.A.B.	06/21/2002
D	3959	ADDED BRACKET NOTES	BD	03/14/2006

PLUMBING FOR USING THE 500HCV WITH NO DUMP VALVE

VERY IMPORTANT:

USE PART #HAD500NS FOR THIS APPLICATION.

REPLACE EXISTING HCV & BRACKET

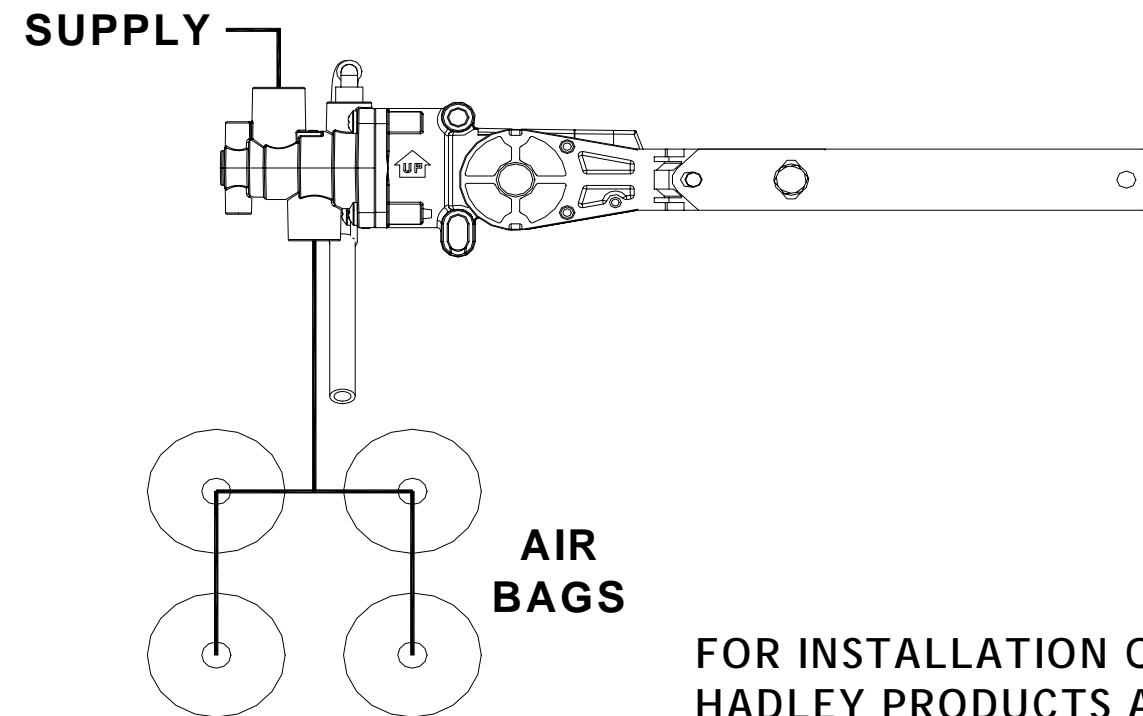
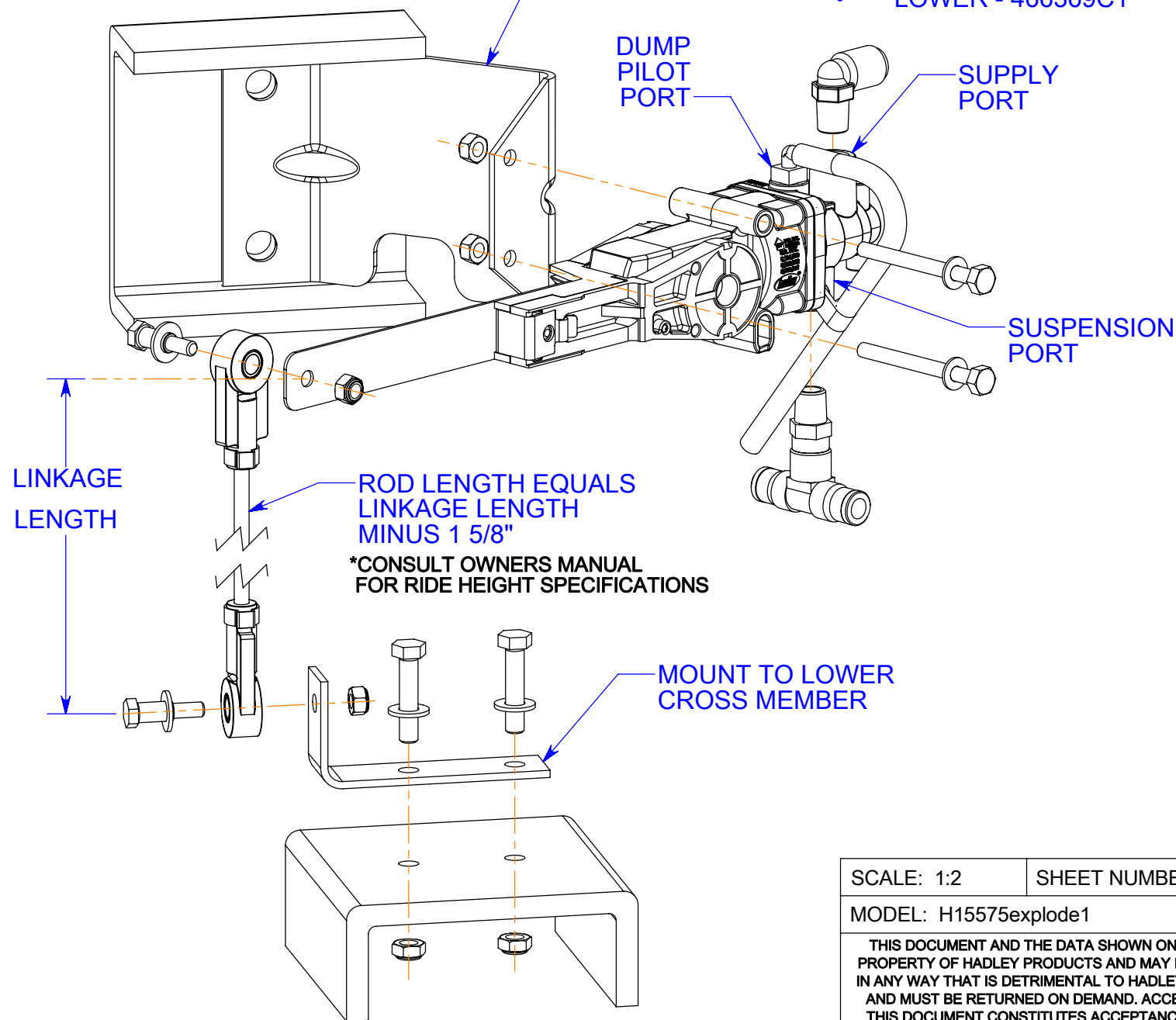
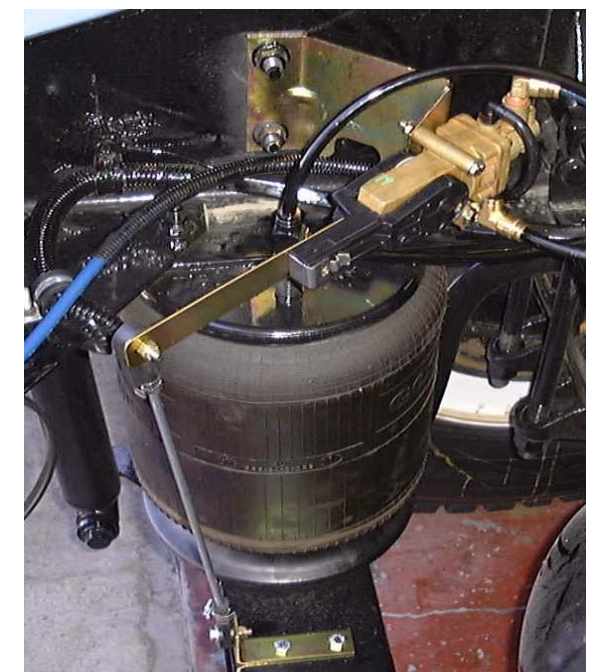
FOR HENDRICKSON SUSPENSIONS ON PAYSTAR ONLY

- DRIVERS SIDE HCV MOUNTING WILL REQUIRE THE FOLLOWING BRACKETS:
 - UPPER - 3562177C1
 - LOWER - 466369C1
- PASSENGER SIDE HCV MOUNTING WILL REQUIRE THE FOLLOWING BRACKETS:
 - UPPER - 3562176CA
 - LOWER - 466369C1

BEFORE



AFTER



FOR INSTALLATION QUESTIONS CALL HADLEY PRODUCTS AT 616-530-1717

SCALE: 1:2	SHEET NUMBER 4 OF 4	ALL DIMENSIONS IN INCHES	HADLEY PRODUCTS 2851 PRAIRIE STREET S.W. GRANDVILLE, MI 49418 PHONE: 616.530.1717 FAX: 616.530.3283 www.hadley-products.com	DRAWN BY: E.R.E.	DATE: 06/19/2001		
MODEL: H15575explode1		TOLERANCES UNLESS OTHERWISE SPECIFIED: DECIMAL 2 PLC. ±.01 DECIMAL 3 PLC. ±.005 FRACTIONAL ±1/64 ANGULAR ±.5		CHECKED BY: D.E.W.	DATE: 03/14/2006		
THIS DOCUMENT AND THE DATA SHOWN ON IT ARE THE PROPERTY OF HADLEY PRODUCTS AND MAY NOT BE USED IN ANY WAY THAT IS DETRIMENTAL TO HADLEY PRODUCTS, AND MUST BE RETURNED ON DEMAND. ACCEPTANCE OF THIS DOCUMENT CONSTITUTES ACCEPTANCE OF THESE CONDITIONS BY THE RECIPIENT.			DESCRIPTION: INSTALLATION DIAGRAM	CAD Solid Works	DRW SIZE: B	DRW NO: H15575	DRW REV: D